

166 Main Street  
Los Altos,  
California

Impressive  
Office Space  
for  
Start-ups,  
Capitol Venture,  
Lawyers, Accounting,  
Graphic Design,  
Real Estate, etc.

## 2nd Floor Office Space in Downtown Los Altos



### PROPERTY INFORMATION

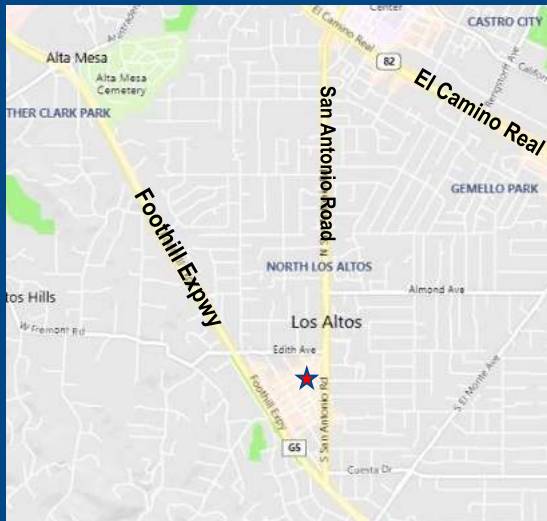
- 2,274+ RSF Office Space
- Ground Floor Entrances From Street and City Parking Lot
- 2 Private Offices, Conference Room, Open Office Area, Kitchenette, Private Restroom and Storage
- Newly Renovated with Hardwood Floors, Skylight for Natural Light, Recessed Lighting, HVAC
- No Elevator
- Walkable Area with Plenty of Amenities, Surrounding City Parking
- Central Location Between Major Thoroughfares
- Contact Agents For Pricing

### FOR MORE INFORMATION CONTACT:

**Matt Perez**  
Lic. #02017798

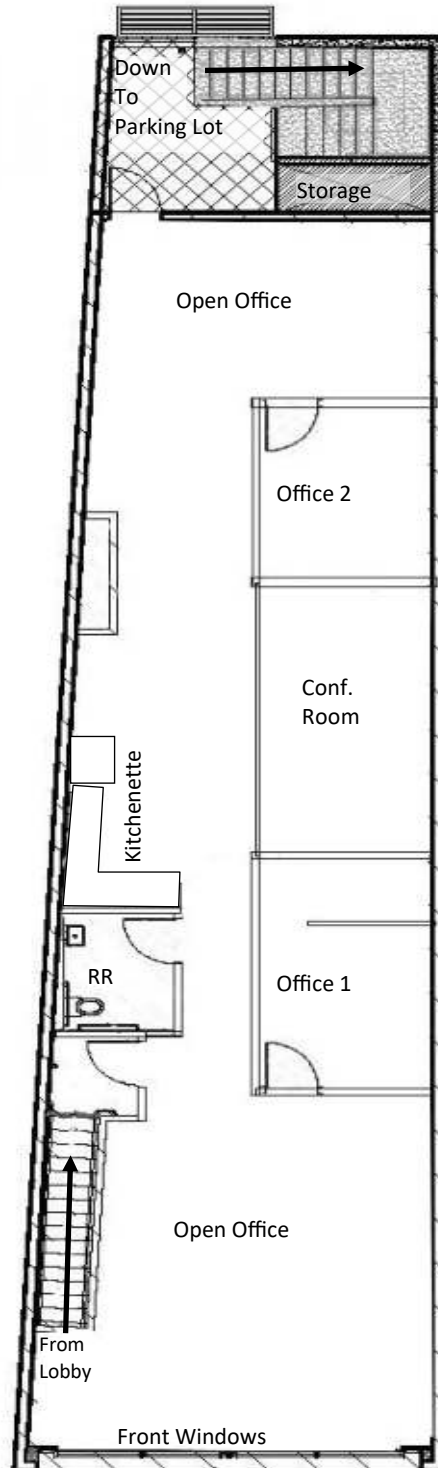
**Michael Joseph**  
Lic. #01382905

[mperez@moinc.net](mailto:mperez@moinc.net) [mjoseph@silverstonecommercial.com](mailto:mjoseph@silverstonecommercial.com)  
(408) 477-2516 (408) 375-5572



SILVERSTONE COMMERCIAL  
256 E Hamilton Avenue Suite A  
Campbell, CA 95008  
Broker CalBRE# 02085393  
[www.silverstonecommercial.com](http://www.silverstonecommercial.com)

# 166 Main Street • Los Altos, California



**SILVERSTONE COMMERCIAL**  
256 E Hamilton Avenue Suite A  
Campbell, CA 95008  
Broker CalBRE# 02085393  
www.silverstonecommercial.com

**Michael Joseph**  
Lic. #01382905

[mjoseph@silverstonecommercial.com](mailto:mjoseph@silverstonecommercial.com)

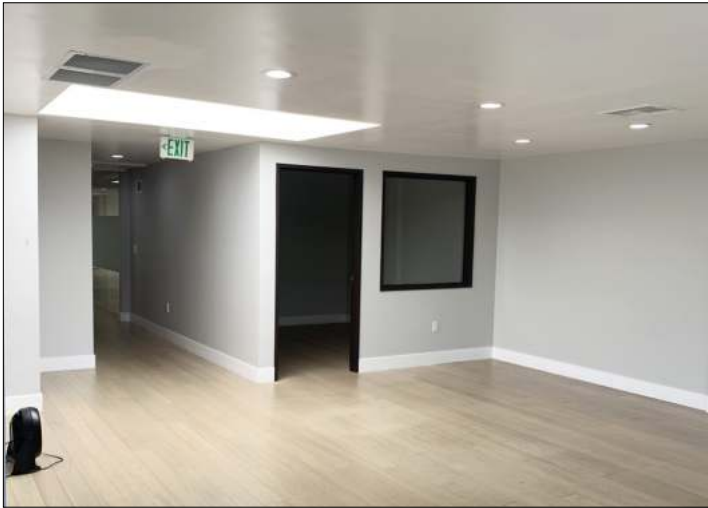
(408) 375-5572

**Matt Perez**  
Lic. #02017798

[mperez@moinc.net](mailto:mperez@moinc.net)

(408) 477-2516

# 166 Main Street • Los Altos, California



**SILVERSTONE COMMERCIAL**  
256 E Hamilton Avenue Suite A  
Campbell, CA 95008  
Broker CalBRE# 02085393  
[www.silverstonecommercial.com](http://www.silverstonecommercial.com)

**Michael Joseph**  
Lic. #01382905

[mjoseph@silverstonecommercial.com](mailto:mjoseph@silverstonecommercial.com)

**(408) 375-5572**

**Matt Perez**  
Lic. #02017798

[mperez@moinc.net](mailto:mperez@moinc.net)

**(408) 477-2516**