

F O R S A L E

Silverstone
Commercial

19234 Lake Chabot Rd
Castro Valley, CA. 94546

FOR SALE

Building Size: 3,470 sq ft.
Lot Size: 20,837 sq ft.

...

APN 084B-0529-011-02



KEY DETAILS

Land Use: School

County Use: School

Dedicated Parking: 11 Spots

On Street Dropoff and Pick-up

This information contained herein has been obtained from sources we deem reliable
We cannot, however, assume responsibility for it's accuracy.

David Silberstein
David@silverstonecommercial.com
408-781-4954
BRE#001880860

www.silverstonecommercial.com

BRE#02085393

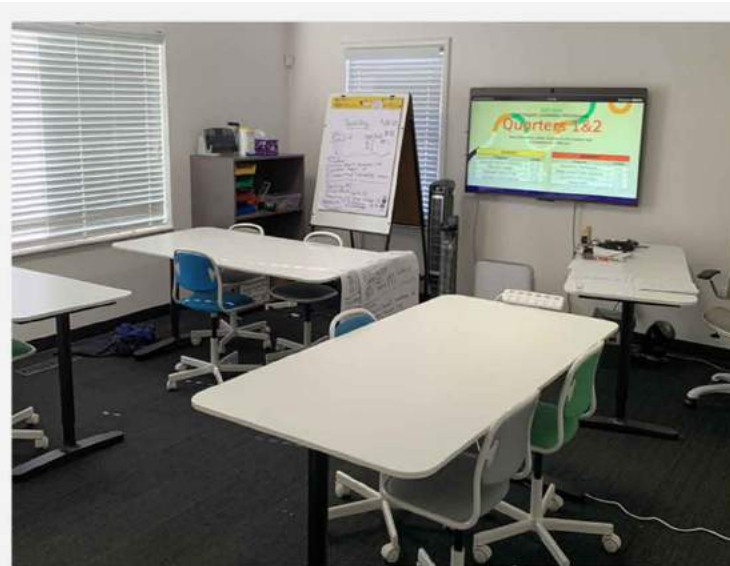
PROPERTY DESCRIPTION

19234 Lake Chabot Rd
Castro Valley, CA. 94546

This site is located right on Lake Chabot Road in Castro Valley. High annual household income. Property is fully gated and comes with 11 dedicated on-site parking spaces. Huge yard with basketball court and areas for additional portables for more classrooms or keep for more play area. Current school is K-12 graders – 30 students. Previous CUP was for 68 children with the Option to increase to 90 children with the Completion of a 1000 sq ft addition. Check with the city for your specific use regarding CUP's.

Castro Valley is the largest community in unincorporated Alameda County. Nestled in a confluence of canyons, Castro Valley is set in the East Bay Area close to Oakland, Berkeley, San Leandro, Hayward just off highway 580.

Touring Dates to follow. Please do not disturb school. Contact agent for more details regarding the property.

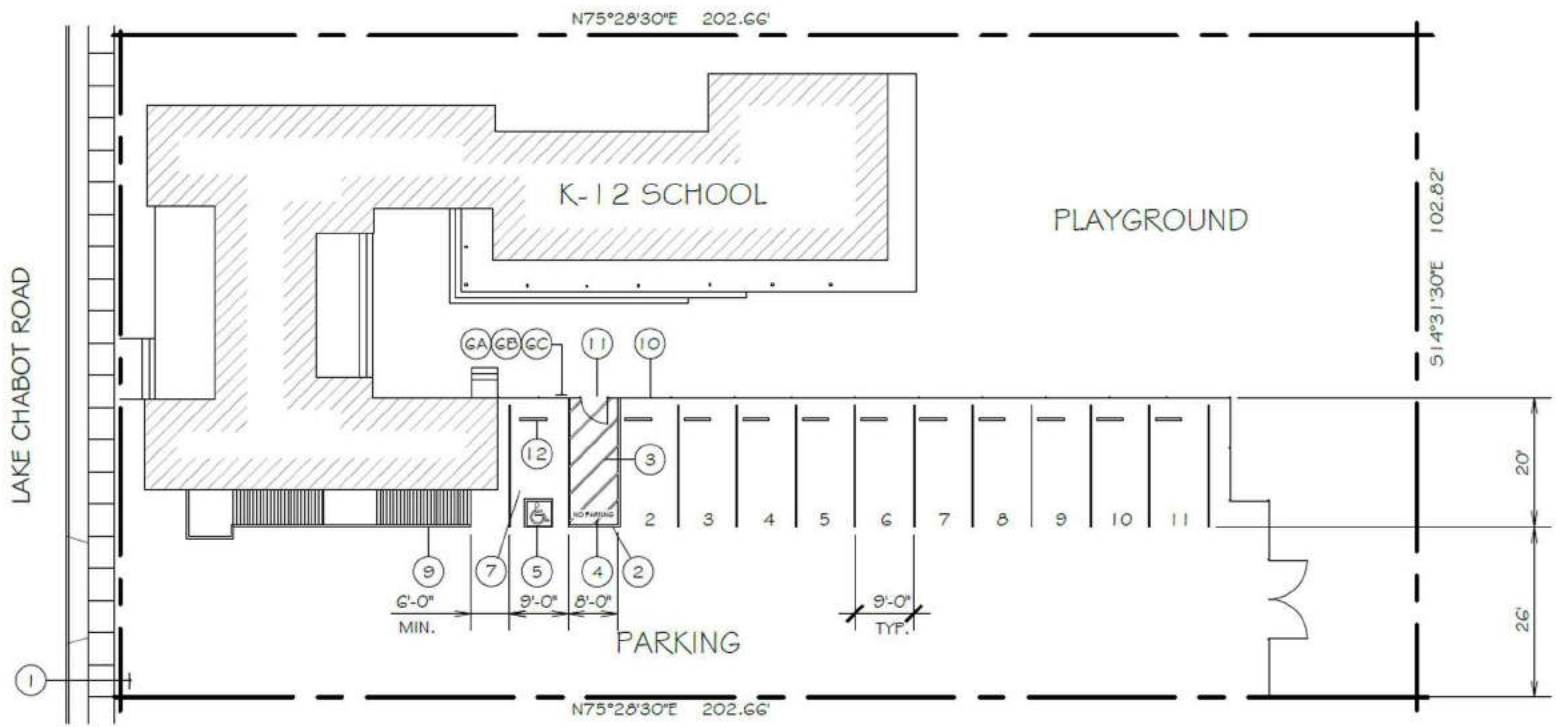


David Silberstein
David@silverstonecommercial.com
408-781-4954
BRE#001880860

This information contained herein has been obtained from sources we deem reliable. We cannot, however, assume responsibility for its accuracy.

Silverstone
Commercial

BRE#02085393 www.silverstonecommercial.com

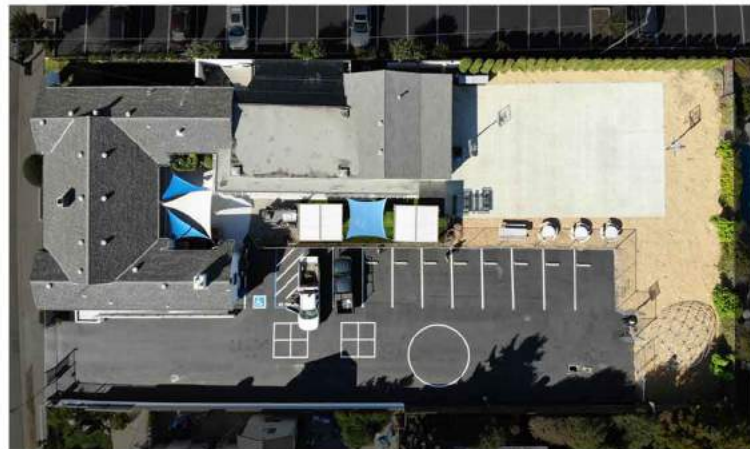


David Silberstein
 David@silverstonecommercial.com
 408-781-4954
 BRE#001880860

Silverstone
 Commercial

This information contained herein has been obtained from sources we deem reliable. We cannot, however, assume responsibility for its accuracy.

BRE#02085393 www.silverstonecommercial.com



Population

	2 mile	5 mile	10 mile
2010 Population	76,501	326,673	832,024
2023 Population	80,009	347,457	887,421
2028 Population Projection	78,677	342,663	877,091
Annual Growth 2010-2023	0.4%	0.5%	0.5%
Annual Growth 2023-2028	-0.3%	-0.3%	-0.2%
Median Age	39.5	39	39.3
Bachelor's Degree or Higher	33%	30%	36%
U.S. Armed Forces	10	199	738

David Silberstein
 David@silverstonecommercial.com
 408-781-4954
 BRE#001880860

Silverstone
 Commercial

This information contained herein has been obtained from sources we deem reliable. We cannot, however, assume responsibility for its accuracy.

BRE#02085393 www.silverstonecommercial.com