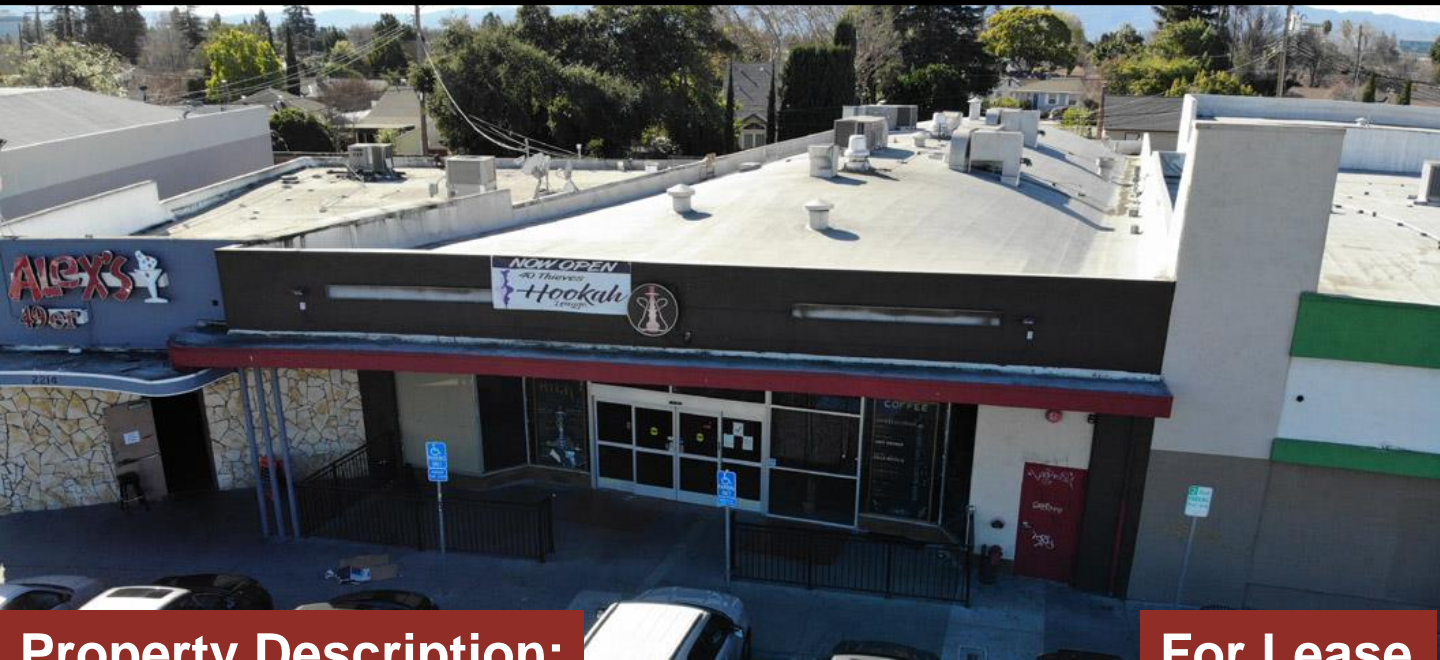




**Silverstone  
Commercial**

**For Lease**

**2220 Business Circle  
San Jose, CA. 95125**



**For Lease**

**Property Description:**

+/- 7,000 SF Building Heavy Daytime Traffic Close Proximity to Valley Fair Mall and Santana Row

Within 1 mile from Santana Row and Downtown San Jose.

Excellent location on the Corner of Stevens Creek Blvd and Bascom Ave Easy Access to Highways 280 and 880.

**Asking Rent: \$2.14 + NNN**

**Highlights:**

- 7,000 sq ft
- Can be divisible
- Perfect for Market or Restaurant
- Huge Daytime Traffic
- Plenty of parking (city maintained)
- Restaurants close by
- Close to highway 280 and 880

David Silberstein  
David@silverstonecommercial.com  
408-781-4954  
BRE#001880860

**David Silberstein**  
David@Silverstonecommercial.com  
www.silverstonecommercial.com BRE# 01880860



**Silverstone  
Commercial**

**For Lease**

**2220 Business Circle  
San Jose, CA. 95125**



David Silberstein  
David@silverstonecommercial.com  
408-781-4954  
BRE#001880860

**David Silberstein**  
David@Silverstonecommercial.com  
www.silverstonecommercial.com BRE# 01880860

This information contained herein has been obtained from sources we deem reliable. We cannot, however, assume responsibility for its accuracy.



**Silverstone  
Commercial**

**For Lease**

**2220 Business Circle  
San Jose, CA. 95125**



David Silberstein  
David@silverstonecommercial.com  
408-781-4954  
BRE#001880860

**David Silberstein**  
David@Silverstonecommercial.com  
www.silverstonecommercial.com BRE# 01880860

This information contained herein has been obtained from sources we deem reliable. We cannot, however, assume responsibility for its accuracy.