

2797 Park Avenue
Santa Clara, CA. 95050

FOR LEASE

Sq Ft: 570
First Floor
\$2.80 sq ft Full Service

...

Suite 102



KEY DETAILS

- *Attractive Office Building
- *Ample Parking
- *Close to County Courthouse, Santa Clara University and San Jose International Airport
- *Easy Access to Freeways, El Camino Real, and the Alameda
- *Janitorial Service Provided
- *Across from Safeway and other Amenities nearby

David Silberstein
David@silverstonecommercial.com
408-781-4954
BRE#001880860

www.silverstonecommercial.com

BRE#02085393

PROPERTY DESCRIPTION

2797 Park Avenue
Santa Clara, CA. 95050

For Lease

Suite 102

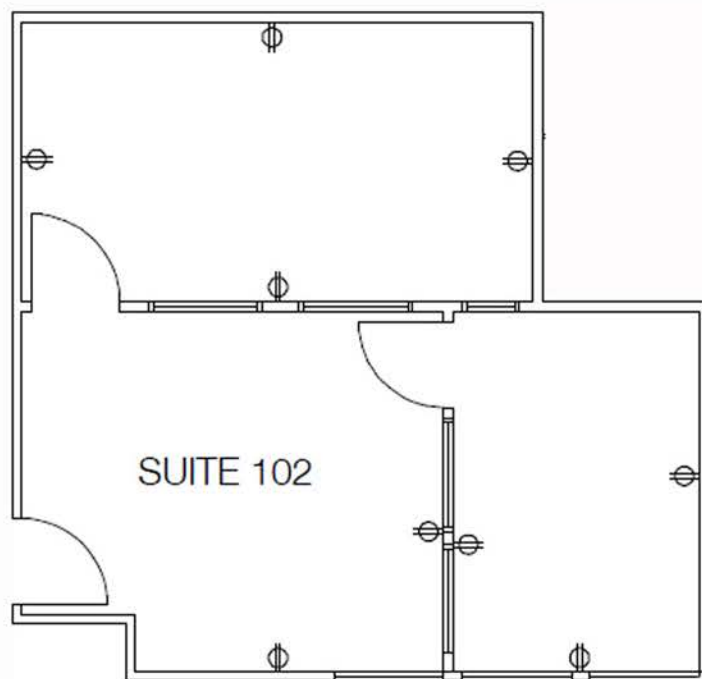
Sq Ft: 570

First Floor

\$2.80 sq ft Full Service

Small Office Space for Lease in Santa Clara

- *Attractive Office Building
 - *Ample Parking
 - *Close to County Courthouse, Santa Clara University and San Jose International Airport
 - *Easy Access to Freeways, El Camino Real, and the Alameda
 - *Janitorial Service Provided
 - *Across from Safeway and other Amenities nearby
- Call agent for more information and to tour.



David Silberstein
David@silverstonecommercial.com
408-781-4954
BRE#001880860

This information contained herein has been obtained from sources we deem reliable. We cannot, however, assume responsibility for its accuracy.

Silverstone
Commercial

BRE#02085393 www.silverstonecommercial.com